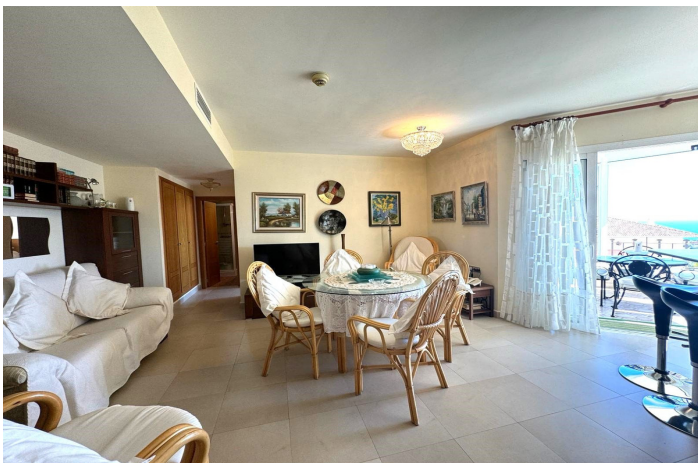


# Middle Floor Apartment for sale in Benalmádena, Benalmádena

340,000 €

Reference: R4881748 Bedrooms: 2 Bathrooms: 2 Build Size: 92m<sup>2</sup> Terrace: 12m<sup>2</sup>





## Costa del Sol, Benalmádena

Adapted apartment in the famous Sensara urbanization. The house consists of two large bedrooms with an en-suite bathroom. Completely exterior, with a natural luminosity that allows you not to have to turn on the light until dark. The kitchen is fully furnished and equipped, spacious enough to be able to cooking. The living room has full access to the terrace and distributes to the bedrooms and the kitchen. This property has a covered garage and storage room for the disposal of all the belongings that we cannot have at home. The entire urbanization consists of aid for people seniors, restaurant, swimming pools, gym, library, movie theater and a wonderful environment where you can relax and walk while enjoying beautiful views of the sea. We inform you that our agency fees are already included in the sale price, so you do not have to pay any type of expense for management or real estate advice. And that in compliance with Decree of the Junta de Andalucía 218-2005 of 11 October, it is reported that notary, registration, ITP and other expenses inherent to the sale are not included in the price. The information provided is indicative, is not binding and has no contractual value. The offer is subject to errors, price changes, availability and/or withdrawal from the market without prior notice. Said information may have undergone modifications that have not yet been incorporated. We suggest you contact the company to obtain the latest information and/or confirm the information presented here. We have experience and we have honesty. Professionals in Benalmádena.

## Features:

### Features

Covered Terrace  
Lift  
Near Transport  
Private Terrace  
Satellite TV  
Storage Room  
Ensuite Bathroom  
Double Glazing  
Fitted Wardrobes  
WiFi  
Gym  
Sauna  
Tennis Court  
Restaurant On Site  
Courtesy Bus  
Day Care  
Near Mosque  
Near Church  
Fiber Optic  
Access for people with reduced mobility

### Views

Sea  
Mountain  
Panoramic  
Garden

### Pool

Communal

### Garden

Communal

### Utilities

Electricity  
Drinkable Water  
Telephone

### Orientation

South  
South West

### Setting

Commercial Area  
Close To Golf  
Urbanisation  
Close To Shops  
Close To Town  
Close To Schools  
Town  
Suburban  
Close To Forest  
Close To Marina

### Furniture

Part Furnished

### Security

Gated Complex  
24 Hour Security  
Alarm System  
Electric Blinds  
Entry Phone  
Safe

### Category

Investment  
Luxury  
Resale

### Climate Control

Air Conditioning  
Cold A/C  
Hot A/C  
Central Heating  
U/F Heating  
U/F/H Bathrooms

### Condition

Good  
Excellent

### Kitchen

Fully Fitted

### Parking

Underground  
Garage  
Private  
Covered