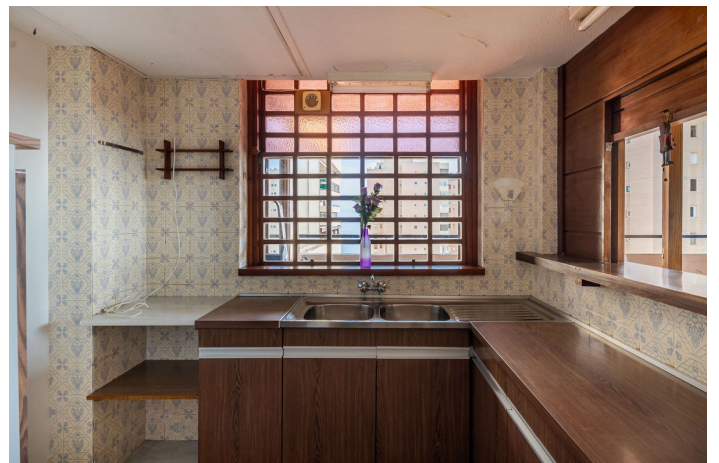
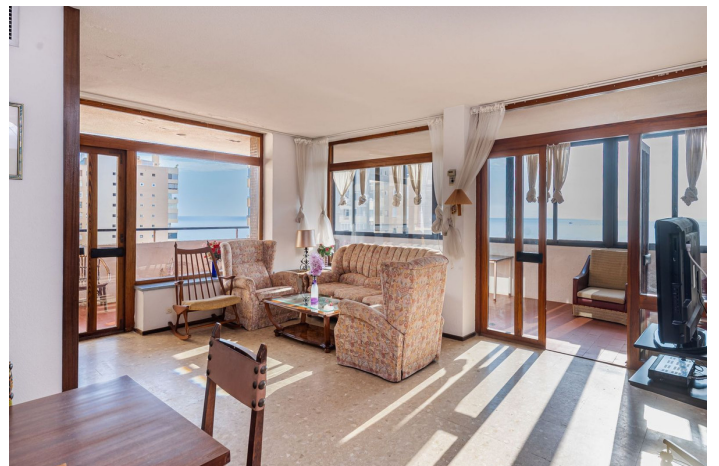


# Middle Floor Apartment for sale in Torremolinos, Torremolinos

**339,000 €**

Reference: R4904362    Bedrooms: 2    Bathrooms: 2    Build Size: 86m<sup>2</sup>    Terrace: 20m<sup>2</sup>





## Costa del Sol, Torremolinos

Fantastic Holiday Home Near the Beach at Torremolinos Playamar

Dreaming of owning a holiday home with a stunning location and breathtaking views of the Mediterranean? Here's your chance to purchase this unique apartment on the 12th floor, offering both comfort and an incomparable panoramic view.

### Perfect Location

The apartment is ideally situated within walking distance of everything you need – supermarkets, restaurants, and the beautiful Playamar beach. Here, you can enjoy a kilometer-long stretch of sand, perfect for relaxing on comfortable sun loungers or sipping a refreshing cocktail under a parasol. The area also boasts a diverse selection of Spanish and international restaurants.

### Apartment Layout

The apartment features:

#### Entrance hall

Bright living room with access to two terraces, one facing east and the other south, both offering plenty of sunlight and magnificent views

Compact kitchen

Two bedrooms

Two bathrooms

#### Exclusive Communal Facilities

This urbanization provides everything you could wish for:

Spacious, well-maintained gardens

Two tennis courts

Padel tennis court

Children's playground

Basketball court

Large swimming pools

The building is equipped with two modern elevators, ensuring easy and convenient access to the apartment.

### About the Playamar Area

Playamar is known as one of the most sought-after destinations in Torremolinos. The beach is easily accessible, including on foot via Avenida Benyamina, and the area exudes a relaxing atmosphere combined with modern comfort.

Don't miss this opportunity to own your own holiday home in this paradise, where you can enjoy the best of both beach and city life.

Contact us today for a viewing – this apartment is a must-see!

## Features:

### Features

Covered Terrace  
Lift  
Near Transport  
Marble Flooring  
Fitted Wardrobes  
Restaurant On Site  
Access for people with reduced mobility

### Views

Sea  
Beach

### Pool

Communal

### Garden

Communal

### Utilities

Electricity

### Orientation

South

### Setting

Commercial Area  
Beachside  
Close To Port  
Urbanisation  
Close To Sea  
Close To Shops  
Close To Town  
Close To Schools  
Beachfront  
Town  
Close To Marina

### Furniture

Fully Furnished

### Security

Gated Complex  
Entry Phone

### Category

Holiday Homes  
Investment  
Bargain  
Beachfront  
Resale

### Climate Control

Central Heating

### Condition

Renovation Required

### Kitchen

Not Fitted

### Parking

Communal