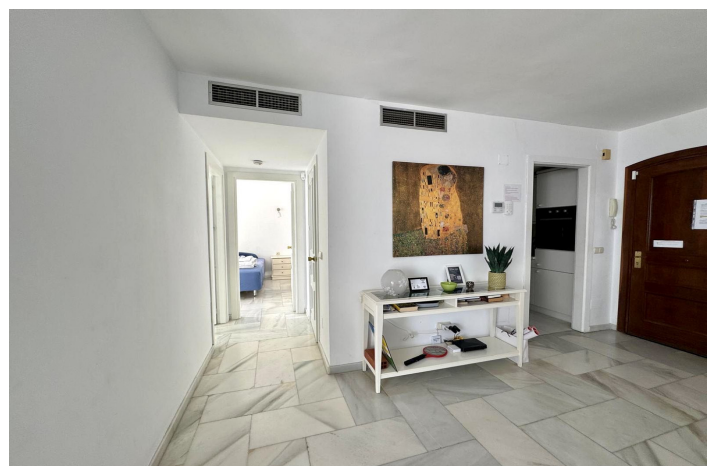


# Middle Floor Apartment for sale in Benalmadena Costa, Benalmádena

**395,000 €**

Reference: R4901635    Bedrooms: 2    Bathrooms: 2    Build Size: 95m<sup>2</sup>    Terrace: 7m<sup>2</sup>





## Costa del Sol, Benalmadena Costa

**\*\*Stunning apartment with Marina Views in Puerto Marina, Benalmádena\*\***

Located in the heart of the iconic Puerto Marina in Benalmádena – one of the world's most renowned marinas – this apartment offers the perfect combination of comfort, style, and an unbeatable location.

Situated on the first floor and covering 95 m<sup>2</sup>, the apartment features a spacious, bright living room with a fireplace, as well as direct access to a covered terrace where you can enjoy breathtaking views of the marina and the sea.

The kitchen is practical and fully equipped with all necessary amenities. There is also a storage room with a washing machine, adding extra convenience.

The apartment includes two bathrooms and two spacious bedrooms, one of which has direct access to a small balcony with the same stunning marina views.

This apartment, sold fully furnished, is perfect as a holiday home or as a vacation rental investment – with an existing tourist license in place, allowing for income potential. The location offers unparalleled access to local attractions, restaurants, and the sunny beach, just a short walk away.

This is a rare opportunity to own an apartment in one of the most sought-after areas on the Costa del Sol – ideal for both a holiday home and rental investment.

## Features:

### Features

Covered Terrace  
Near Transport  
Private Terrace  
Marble Flooring  
Fitted Wardrobes  
WiFi

### Views

Sea  
Port

### Furniture

Fully Furnished

### Category

Resale

### Orientation

South

### Setting

Commercial Area  
Urbanisation  
Close To Sea  
Close To Shops  
Close To Town  
Port  
Marina

### Kitchen

Fully Fitted

### Climate Control

Air Conditioning  
Cold A/C  
Hot A/C  
Fireplace

### Condition

Good

### Security

Alarm System  
Entry Phone