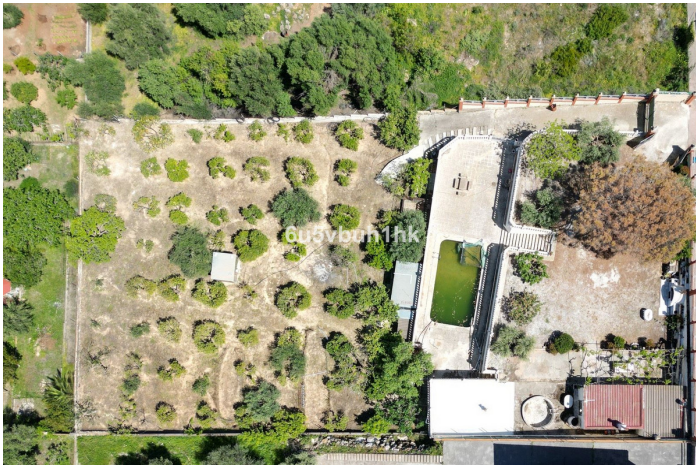


Plot for sale in Alhaurín de la Torre, Alhaurín de la Torre

399,000 €

Reference: R4705864 Plot Size: 2,500m² Build Size: 61m²



Valle del Guadalhorce, Alhaurín de la Torre

The Pinos de Alhaurín urbanization, located in a spectacular natural environment in Malaga, is a place that stands out for its tranquility and beauty. Surrounded by mountains and vegetation, this privileged location offers a peaceful environment for its residents. In addition, it has a well-developed infrastructure, a wide variety of homes that adapt to different needs and preferences, well-kept common areas, security measures and proximity to services such as supermarkets, restaurants and schools, which makes it an ideal place to enjoy a high quality of life on the Costa del Sol. In this idyllic environment, we are pleased to offer an exclusive 2500 m² plot in the Pinos de Alhaurín urbanization. This stunning plot features a private swimming pool from which you can enjoy excellent panoramic views of the surrounding mountains and green landscape. With a spacious terrace perfect for relaxing outdoors, this property also offers land with fruit trees, olive and almond trees, adding extra charm and the opportunity to grow fresh produce in your own garden. In addition, this plot allows the construction of a house of up to 325m² or 3500 sqm giving you the opportunity to design and create the home of your dreams with large spaces and all the comforts you want. The buildability index is 0.13m²/m²s and the surface occupancy rate is 10%. It should be noted that the plot currently has a large barbecue and a 60m² house with kitchen and bathroom, allowing future owners to enjoy the facilities while planning and building the house of their dreams. Don't miss the opportunity to acquire this exclusive property and make your dreams of living in a natural paradise on the Costa del Sol come true. Contact us today for more information and to schedule a visit.

Features:

Features

Private Terrace
Storage Room

Pool

Private

Views

Mountain
Panoramic
Country

Setting

Close To Shops
Close To Town
Close To Schools