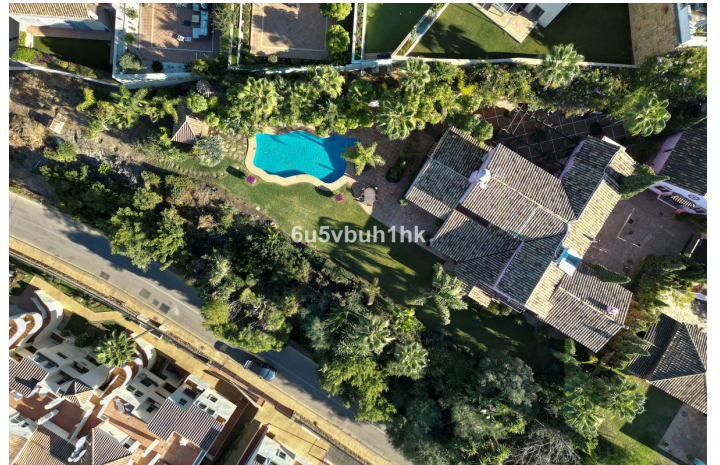


Plot for sale in Benahavís, Benahavís

795,000 €

Reference: R4855243 Plot Size: 512m²



Costa del Sol, Benahavís

This is a very rare opportunity to purchase an elevated plot with golf, mountain and sea views located within the peaceful urbanisation of Puerto del Almendro. This contemporary villa project has been designed by renowned Marbella architect Cesar de Leyva and he has created a stunning, easily maintained home which would make an excellent second home or holiday rental. This modern, south and south west facing house is distributed over four floors, with terraces on all levels and a rooftop terrace where you can enjoy breathtaking views of Gibraltar and North Africa. The design includes a lift to all floors and a private pool on the upper terrace. The project can be adapted to suit a buyers requirements and has the preliminary planning application in place. The views are protected ensuring a safe haven investment. Puerto del Almendro sits below the Serranía de Ronda mountain range next to Los Arqueros golf and country club and is surrounded by exclusive residential urbanisations. It is just a 5 minute drive to San Pedro de Alcantara and 10 minutes to Puerto Banus.

Features:

Features

Near Transport

Views

Sea

Mountain

Country

Golf

Setting

Close To Golf

Close To Shops

Close To Town

Close To Schools